

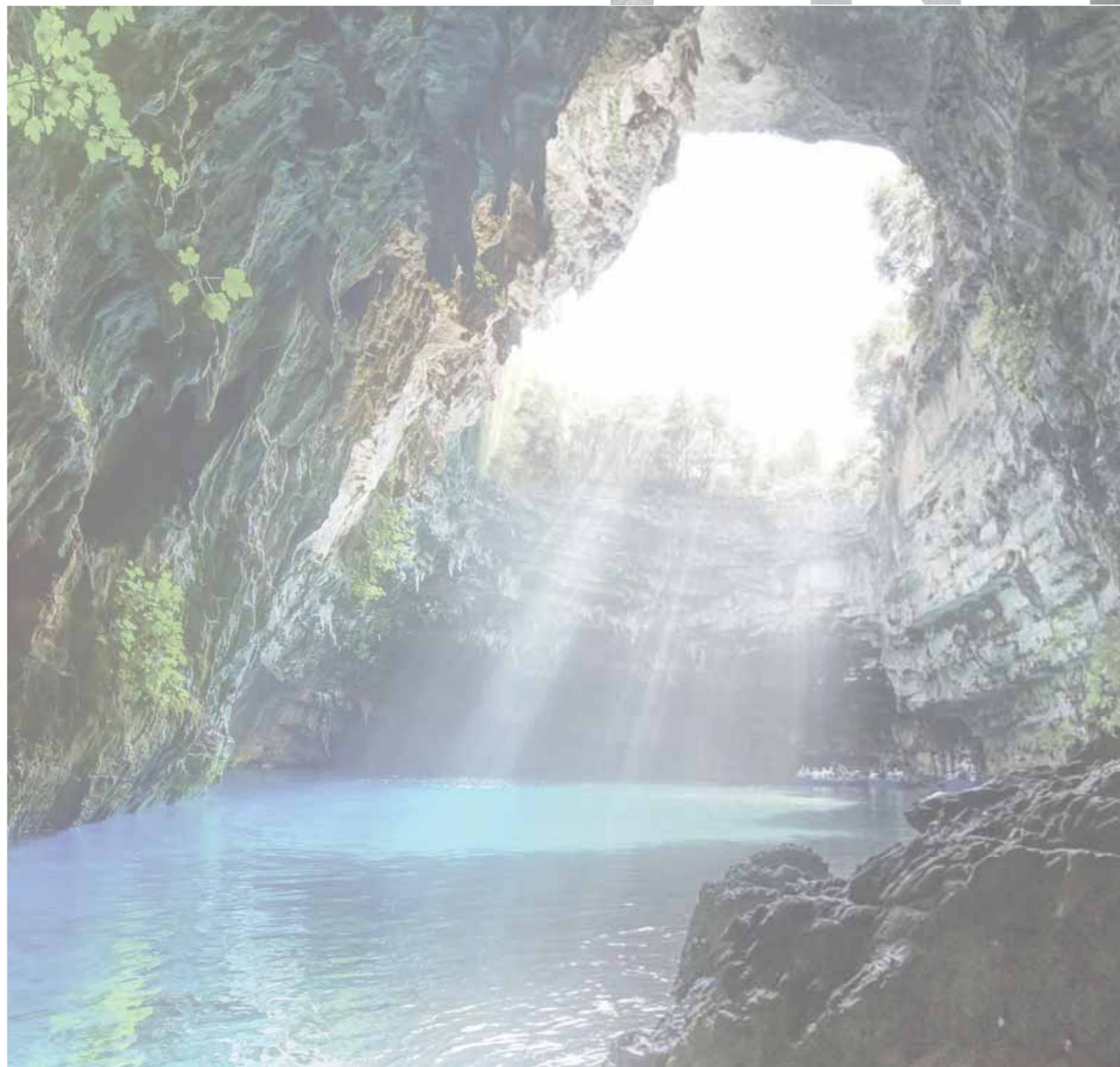
LINEERA

GRUPPO **disano** 



STRUCTURE

I N F R A



Stations, airports, and other major transport infrastructure now frequently assume the role of landmarks, i.e. easily recognized marks of urban renewal and city plans. This is why the design of major infrastructure is increasingly being entrusted to great architects. A lighting system, therefore, must fulfil its functions in the best way possible while at the same time enhancing the designers' architectural choices. The extraordinary experience acquired by Disano, which has been called upon to provide the lighting systems for some of the infrastructure systems (such as the high speed train station of Liege) designed by the great Spanish architect, Santiago Calatrava, shows how light can become an integral element in these works, positioned inside the structure in order to provide extraordinary visibility at night. This is a new approach that can also be applied to smaller stations and ordinary roads, where a good lighting system will provide more safety, efficiency and energy saving and a significantly better aesthetic appeal. This is why illumination for large-scale and infrastructure projects is an increasingly important factor in the decisions made by both designers and clients.

Les gares, les aéroports et les grandes voies de communication forment aujourd'hui un « repère », un signe extérieur de la requalification et de l'ambition d'une ville. Les plus prestigieuses infrastructures sont désormais signées par les grands noms de l'architecture. L'éclairage doit se montrer impeccable non seulement sur le plan pratique, mais aussi sur le plan esthétique, en valorisant le choix stylistique des architectes. Fort de son extraordinaire expérience, l'Italien Disano a été choisi pour éclairer plusieurs infrastructures (comme la gare TGV de Liège) de l'illustre architecte espagnol Santiago Calatrava. La lumière devient ainsi un élément constructif de l'œuvre et se loge parmi la structure pour lui donner une visibilité nocturne extraordinaire. Une nouvelle approche qui vaut également pour les petites gares et pour les routes ordinaires, où un bon éclairage peut optimiser aujourd'hui la sécurité, l'efficacité, l'économie d'énergie et l'esthétique. Dans les grands travaux et les infrastructures, l'éclairage est un facteur de décision de plus en plus important pour les architectes et pour les clients.

Estaciones, aeropuertos, grandes vías de comunicación asumen a menudo el papel de hitos, de signos claros de la renovación y de las ambiciones de una ciudad. Por esto, los proyectos de las infraestructuras más importantes se encomiendan cada vez más a grandes arquitectos. El alumbrado tiene, pues, que cumplir de la mejor manera con las tareas funcionales, pero también resaltar las elecciones arquitectónicas de los encargados de los proyectos. Las experiencias extraordinarias de Disano, que ha sido elegida para alumbrar algunas infraestructuras (como la Estación de Alta Velocidad de Lieja) diseñadas por el gran arquitecto español Santiago Calatrava, demuestran como la luz puede convertirse en un elemento formal de estas obras, colocándose dentro de los elementos estructurales para darles una visibilidad nocturna extraordinaria. Un enfoque nuevo que vale también para estaciones pequeñas y vías normales, donde un alumbrado correcto puede determinar hoy más seguridad, más eficiencia, ahorro energético y una mejora firme de la estética. Por esto el alumbrado es un factor cada vez más importante en las elecciones de los proyectistas y en las de los clientes.

Вокзалы, аэропорты и крупные пути сообщения все чаще играют роль своеобразных "ориентиров" — хорошо узнаваемых признаков обновления и планирования города. Вот почему проекты наиболее важных инфраструктур все чаще доверяют великим архитекторам. Поэтому освещение должно как можно лучше выполнять функциональные задачи, а также улучшать архитектурный выбор дизайнеров. Исключительный опыт компании Disano, которая была выбрана для освещения некоторых инфраструктур (таких как вокзал Льежа высокоскоростной линии), спроектированных великим испанским архитектором Сантьяго Калатрава, доказывает, как свет может стать неотъемлемой частью этих работ, установленный между структурными элементами сооружения, даря ему необыкновенную ночную видимость. Новый подход, который также применяется к небольшим вокзалам и обычным дорогам, где правильное освещение дает больше безопасности, большее эффективности, энергосбережения и заметного эстетического улучшения. Вот почему освещение в области крупных проектов и инфраструктуры становится все более важным фактором в решениях, принимаемых проектировщиками и заказчиками.

Stazioni, aeroporti e grandi vie di comunicazione assumono oggi il ruolo di "landmark", segni ben riconoscibili del rinnovamento e delle ambizioni di una città. Per questo i progetti delle più importanti infrastrutture vengono sempre più spesso affidati a grandi architetti. L'illuminazione deve quindi assolvere al meglio i compiti funzionali, ma anche saper valorizzare le scelte architettoniche dei progettisti. Per merito delle sue eccezionali esperienze, Disano è stata scelta per illuminare alcune delle maestose infrastrutture firmate dal grande architetto spagnolo Santiago Calatrava, tra cui, la Stazione dell'Alta Velocità di Liegi. Simili opere dimostrano come la luce si inserisca perfettamente all'interno degli elementi strutturali, conferendo loro una straordinaria visibilità notturna. Un approccio nuovo che vale anche per piccole stazioni e strade ordinarie, dove una corretta illuminazione oggi può portare più sicurezza, maggiore efficienza, risparmio energetico e un deciso miglioramento dell'estetica. Ecco perché l'illuminazione nel settore delle grandi opere e delle infrastrutture è un fattore sempre più determinante nelle scelte dei progettisti e in quelle dei committenti.

S T R U C T U R E



Zranca Luka Airport Zagreb, Croatia



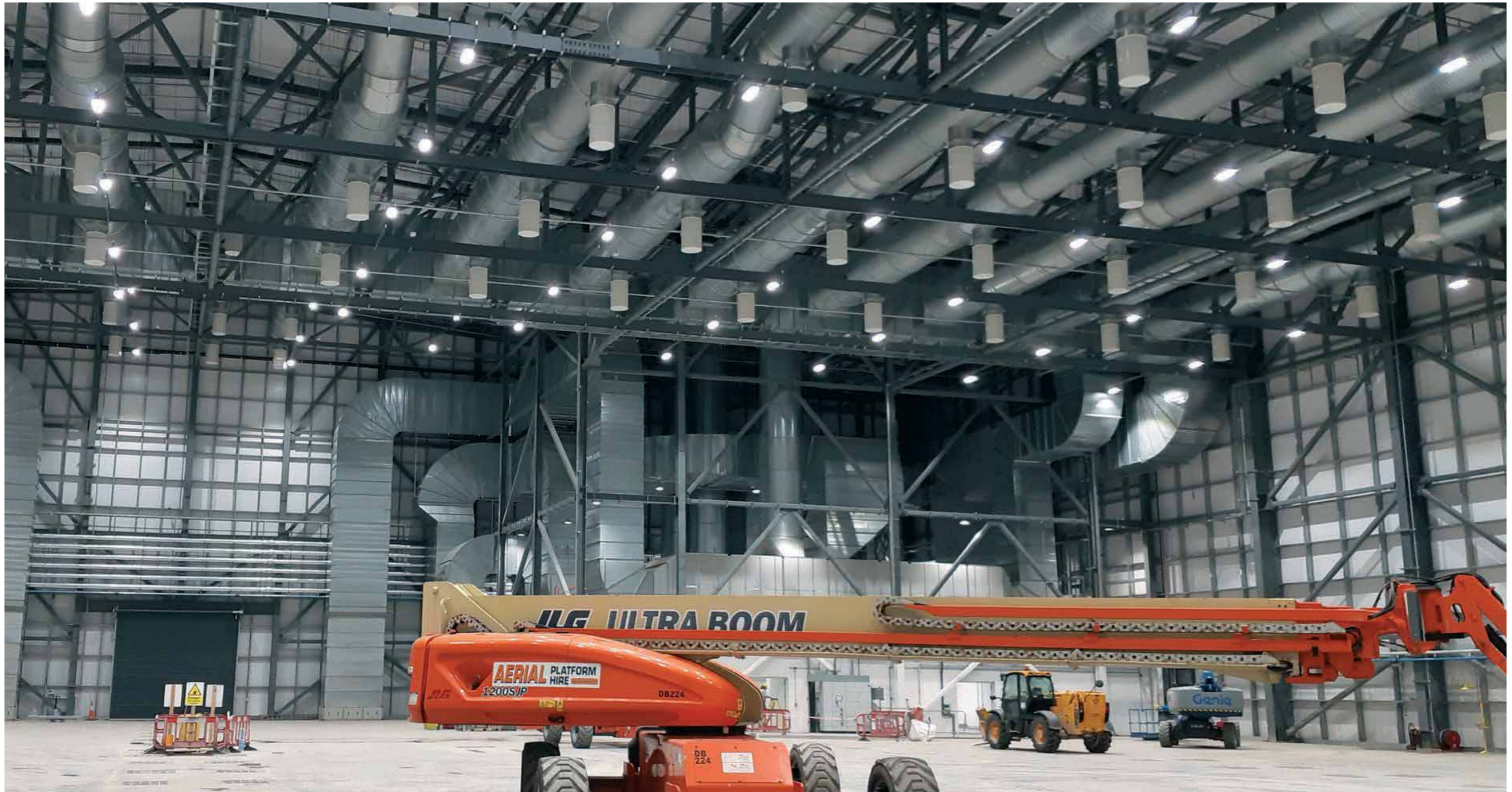
Leonardo da Vinci Airport Rome-Fiumicino, Italy



El Prat de Llobregat Airport Barcelona, Spain



Malpensa 2000 Airport Varese - Italy



Shannon Airport Ireland



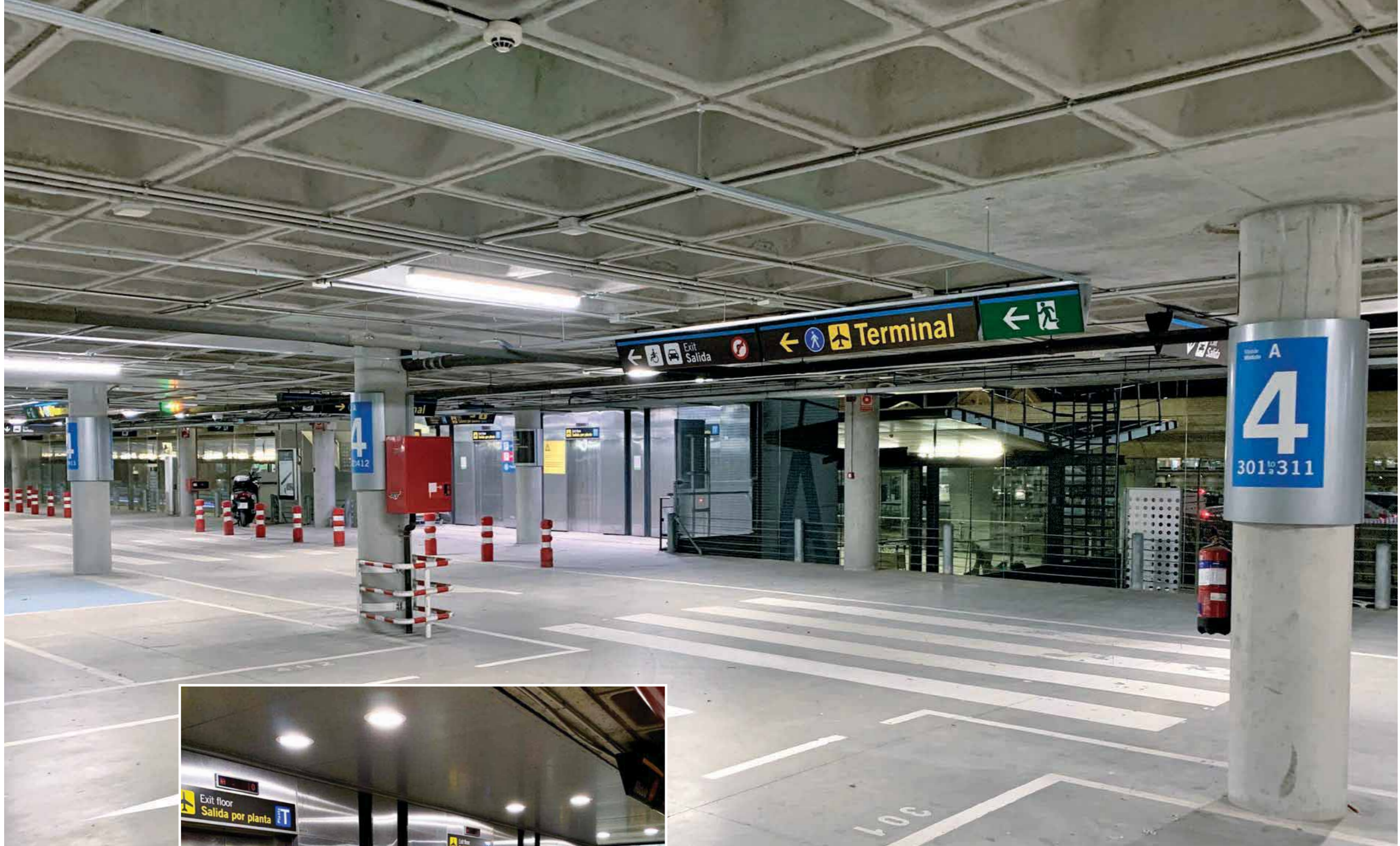
Punta del Este International Airport Maldonado, Uruguay



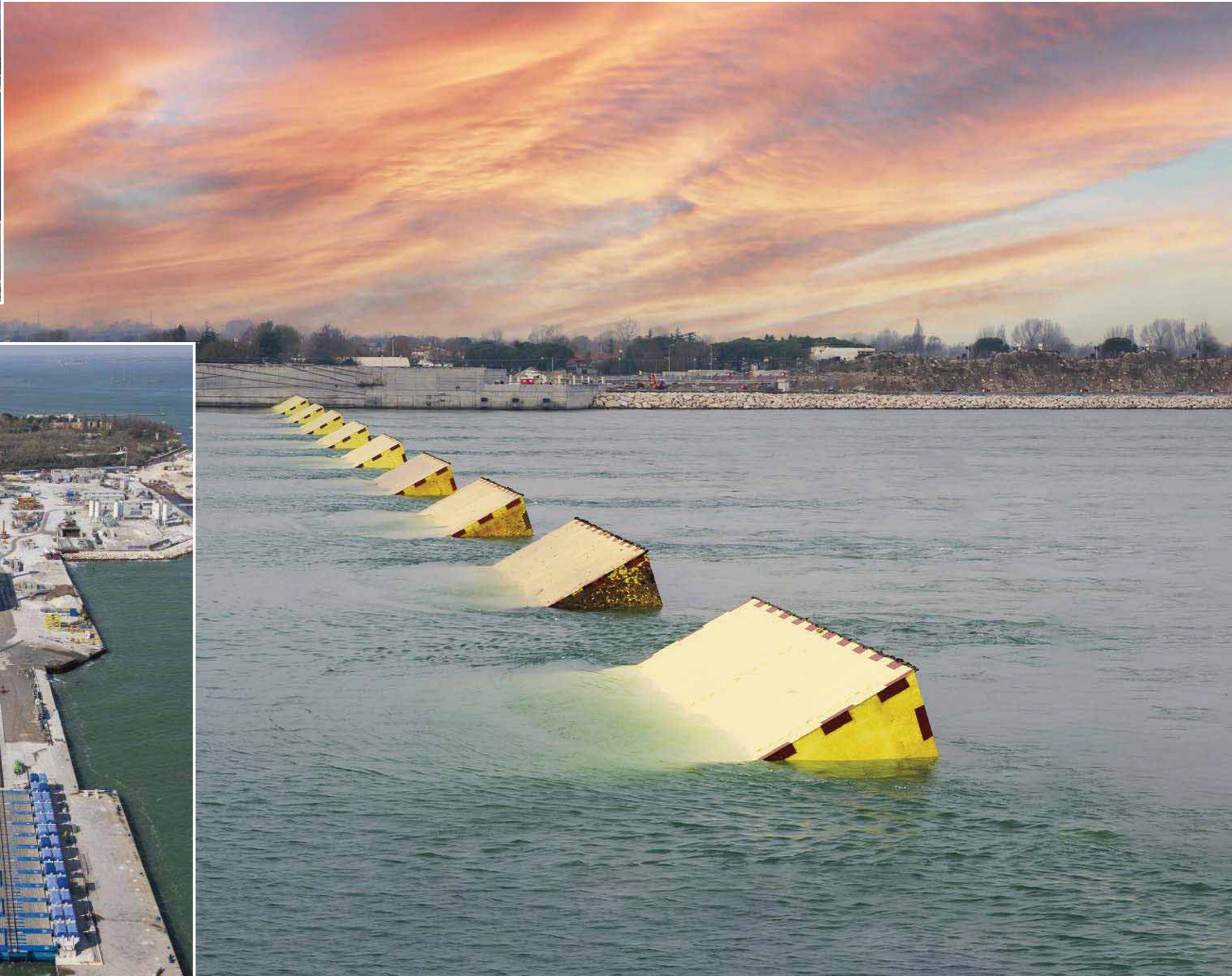
Iberia Airport Madrid, Spain



Airport de Toussus le Noble, France



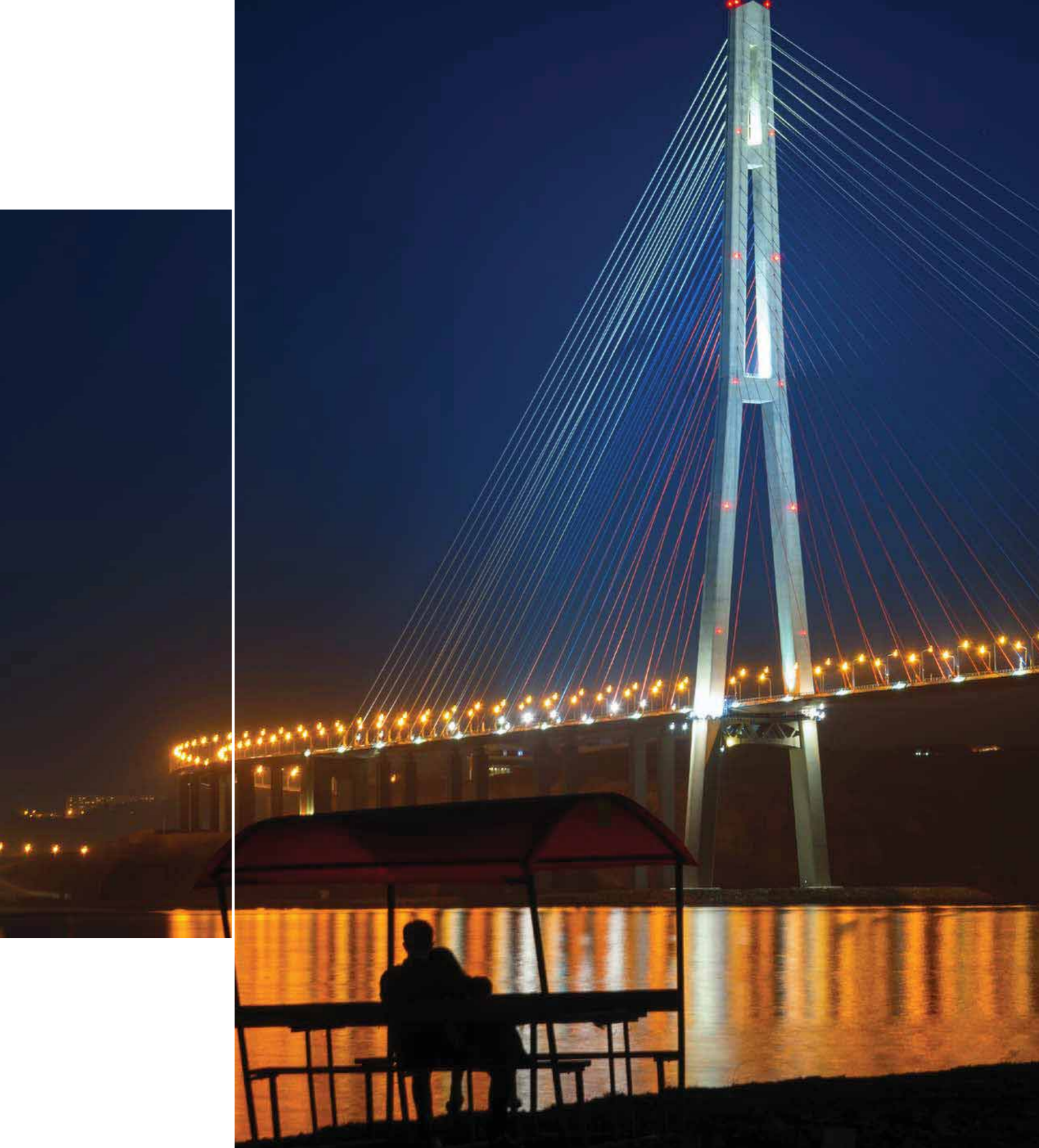
Adolfo Suarez Airport Madrid, Spain



The MOSE System Venice, Italy



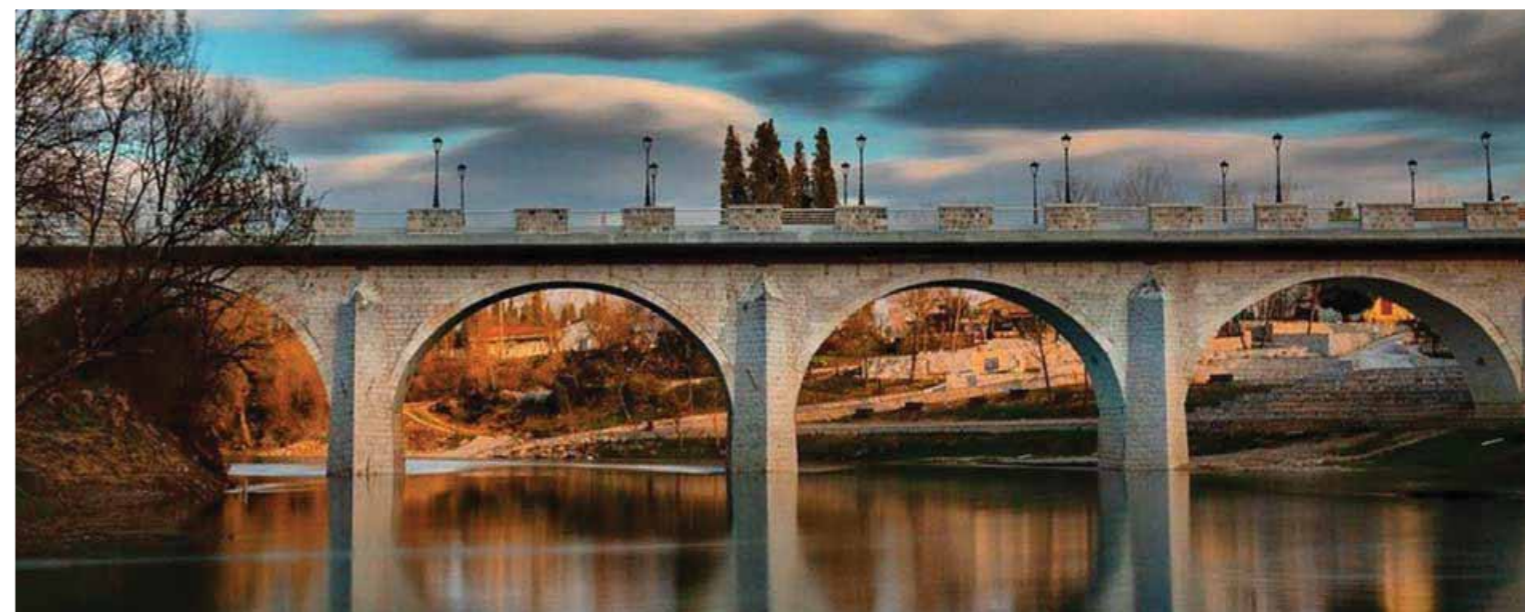
Moerdijk Bridge Rotterdam, the Netherlands



Rusky Bridge Vladivostok, Russia



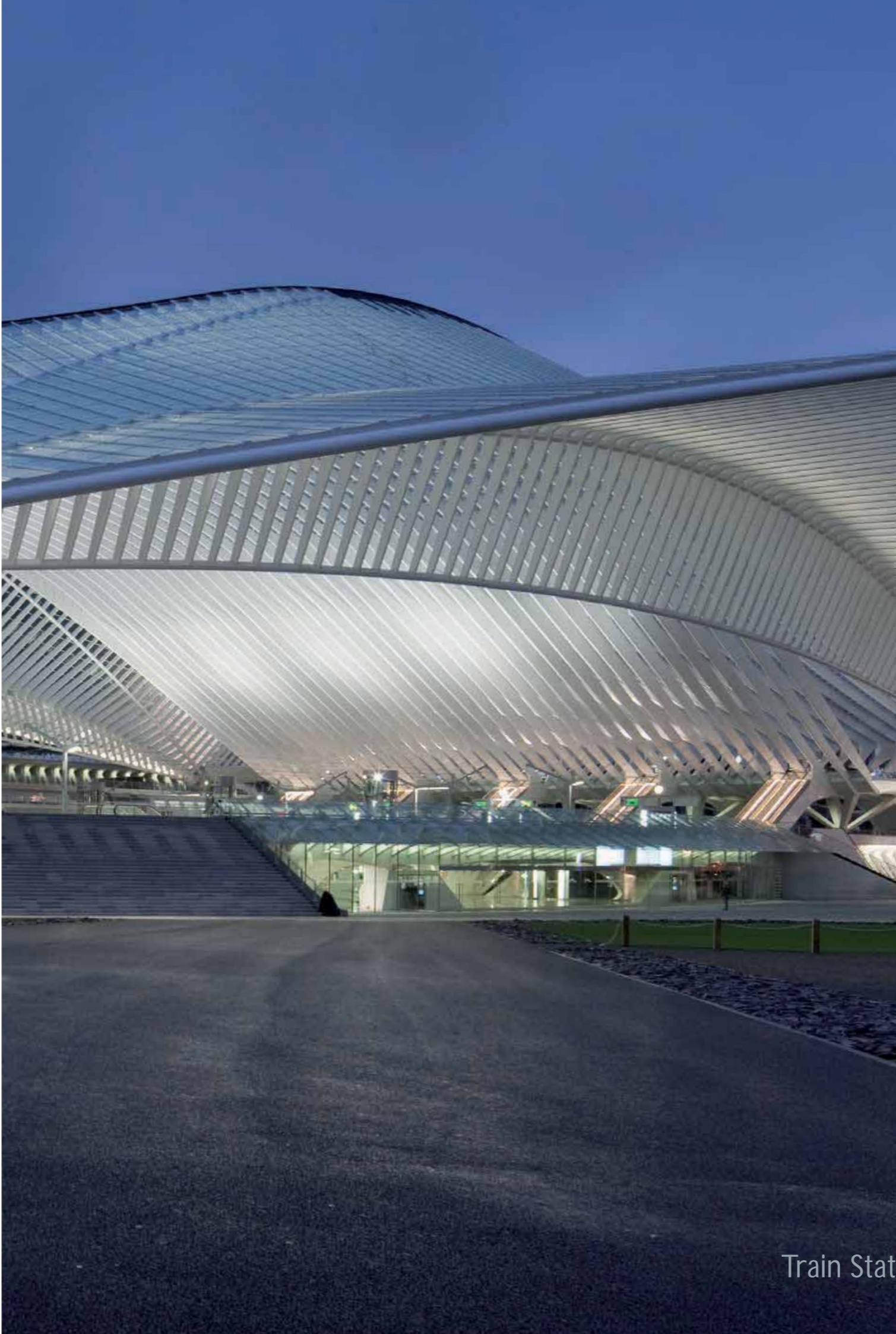
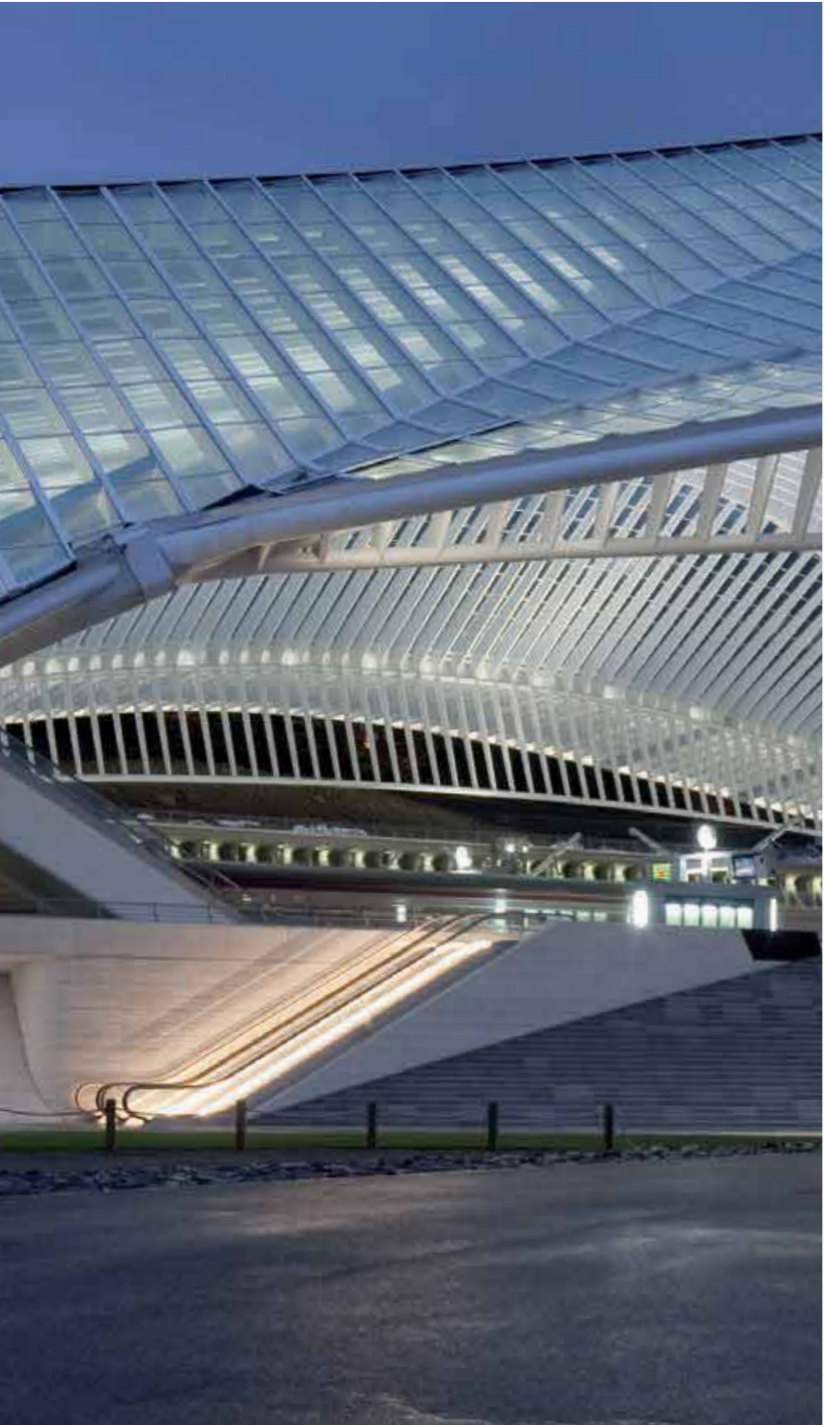
Puh Bridge Ptuj, Slovenia



Danilovgrad Montenegro



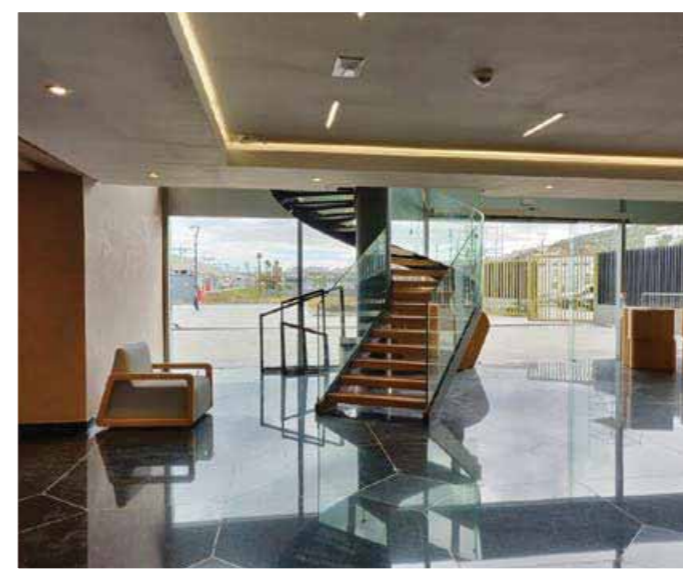
Main Station Prague, Czech Republic



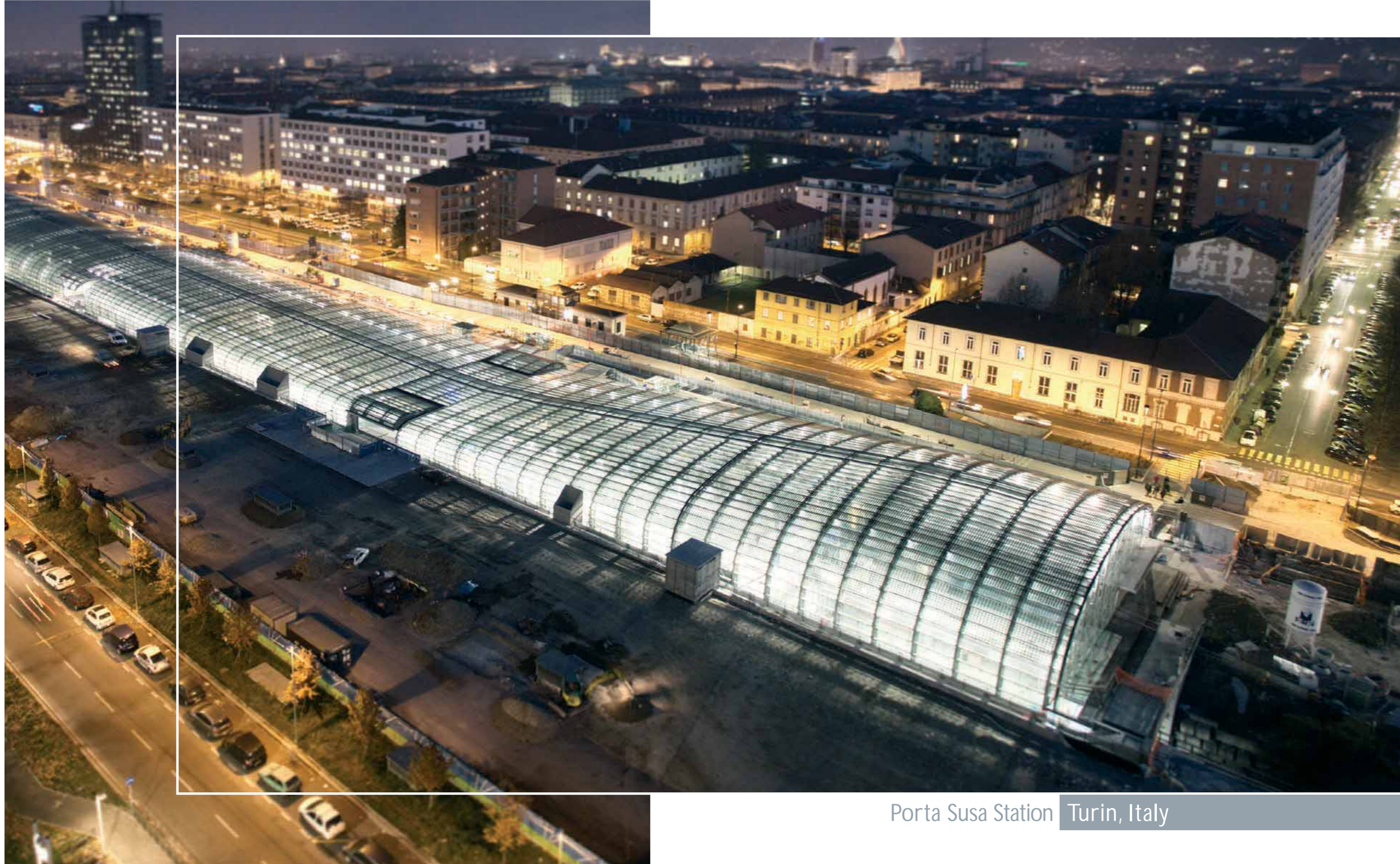
Train Station Liège, Belgium



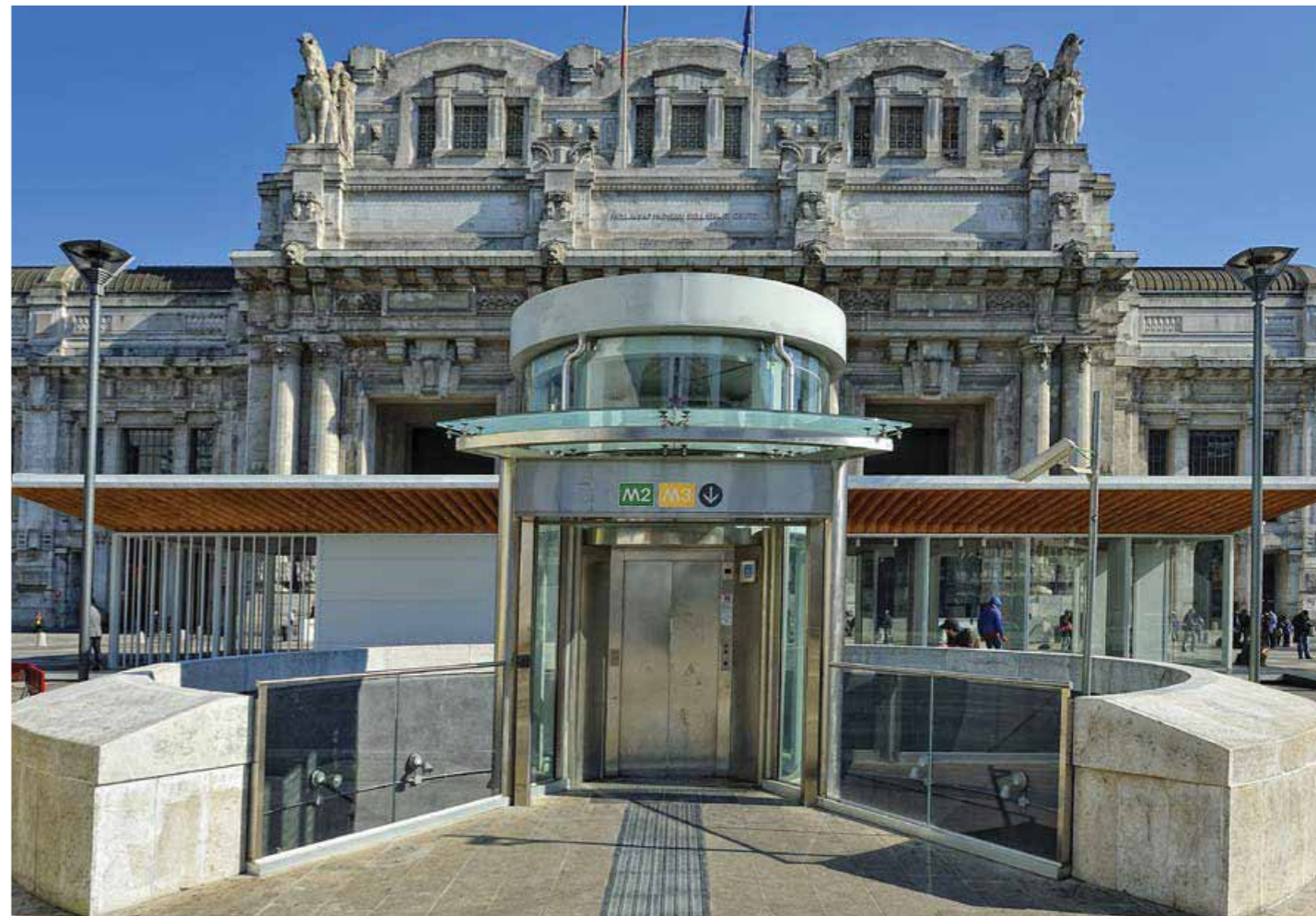
Train Station Lisieux, France



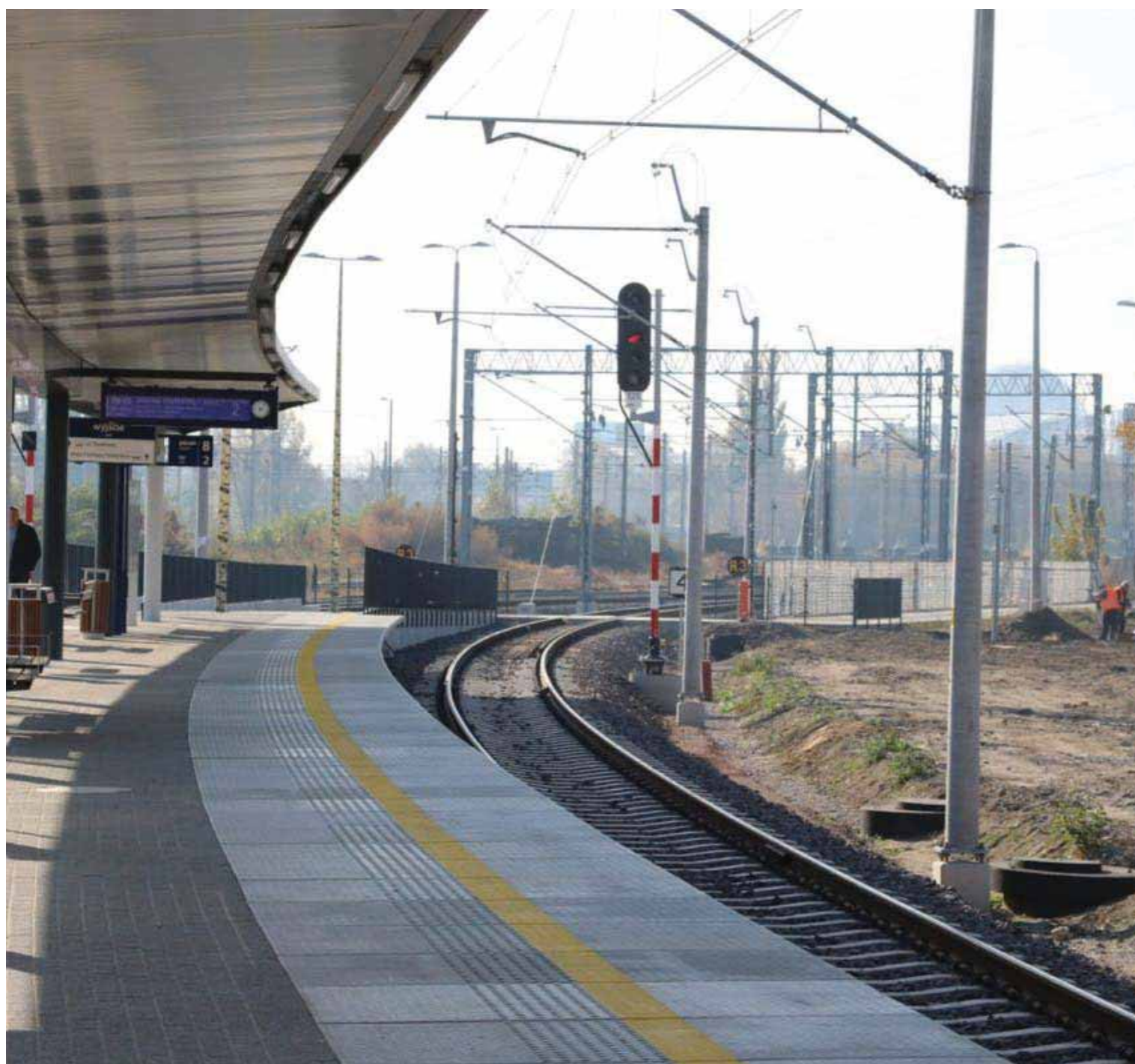
Nouvelle Gare TGV Tangier, Morocco



Porta Susa Station Turin, Italy



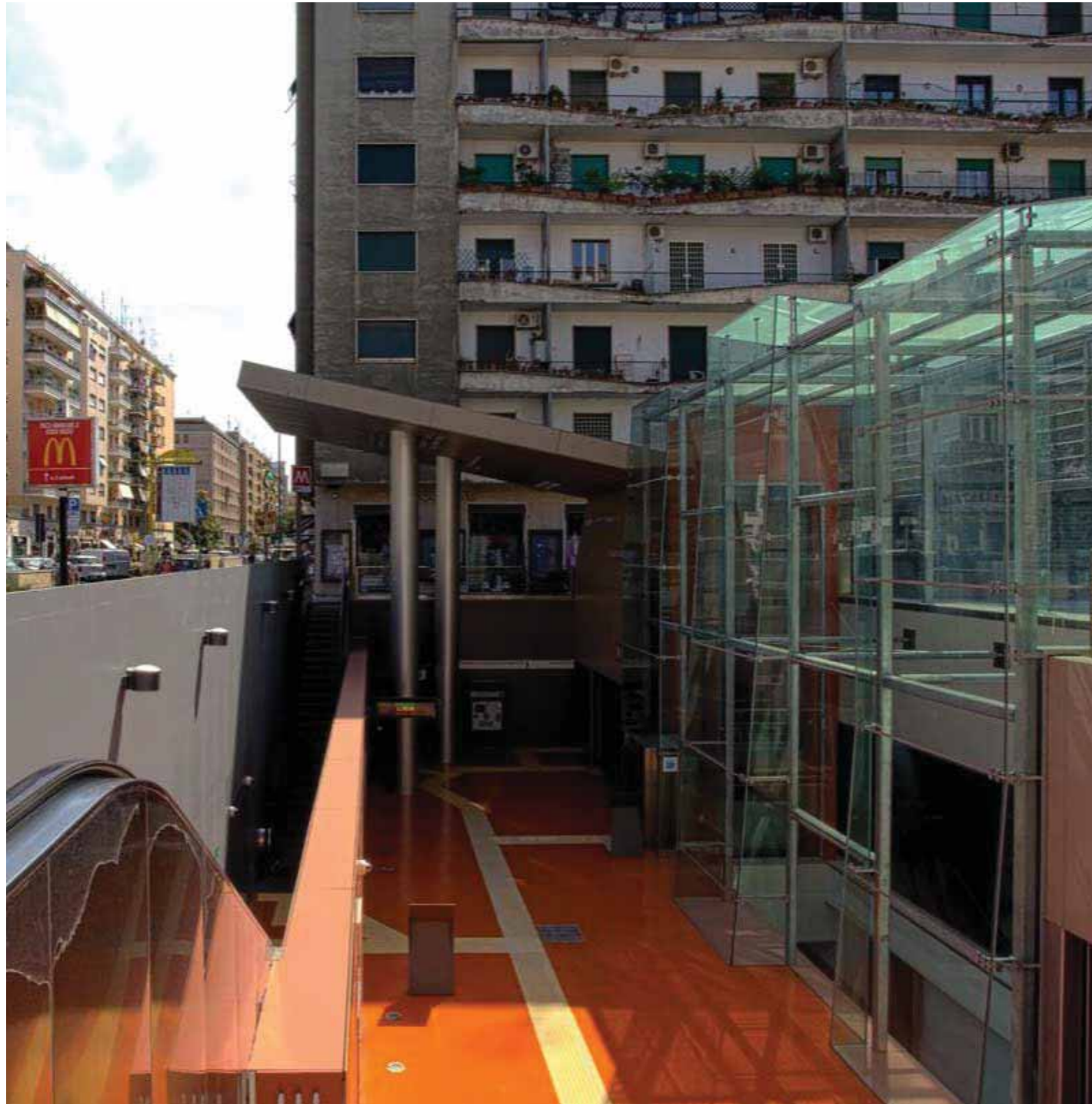
Central Station Milan, Italy







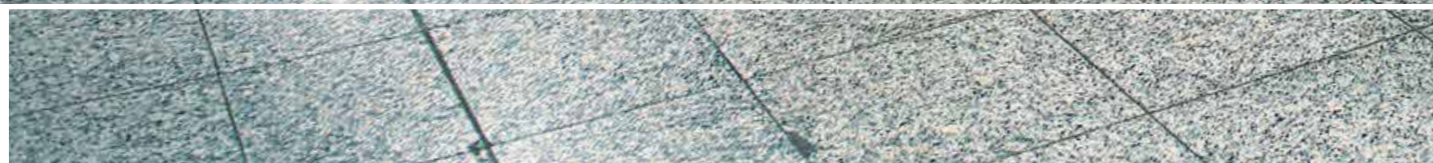
Malpensa 2000 Station Italy



B1 Metro line Rome, Italy



M5 Metro line Milan, Italy



Athens Underground Greece



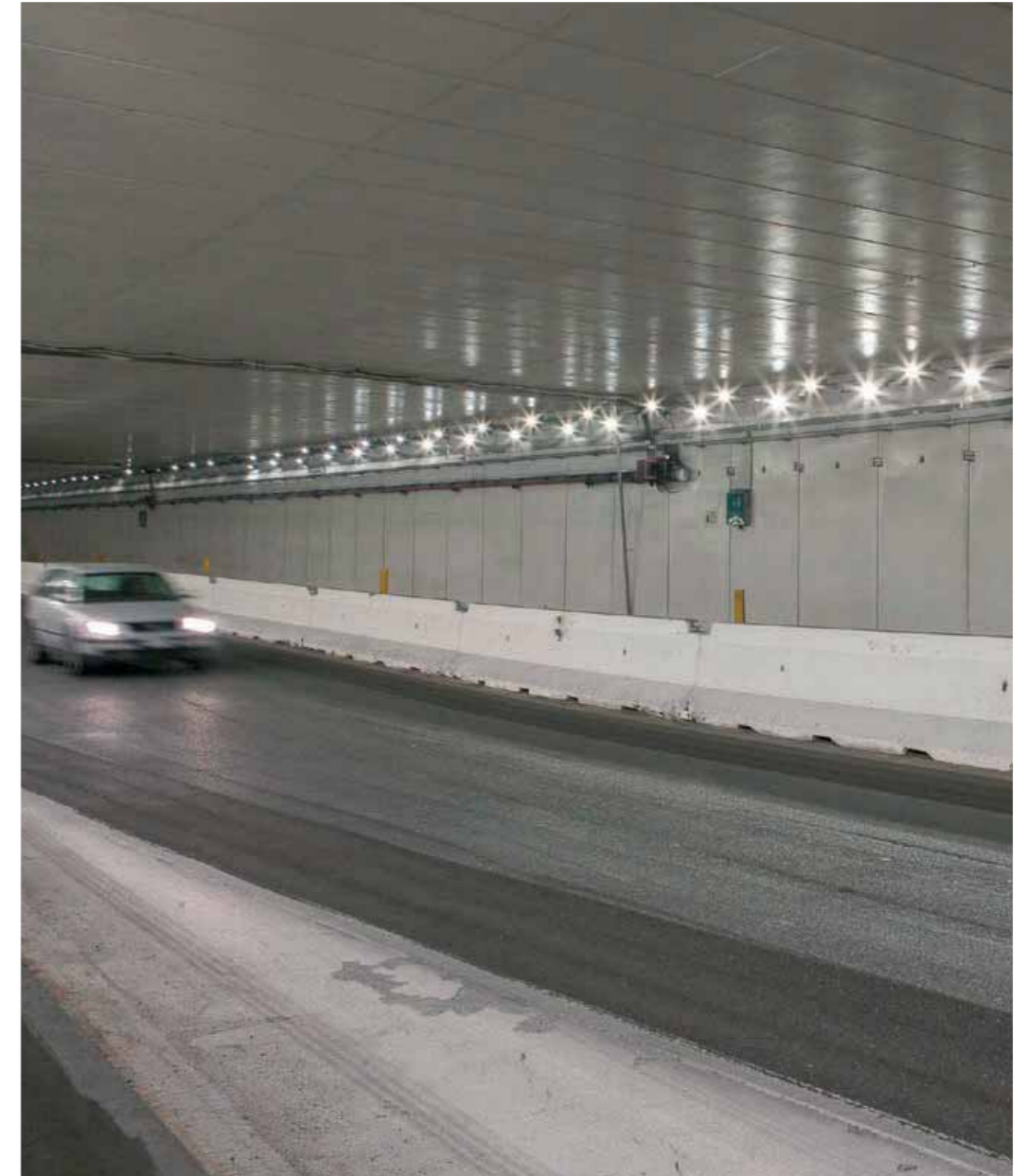
Suez Canal Egypt



Port Koper, Slovenia



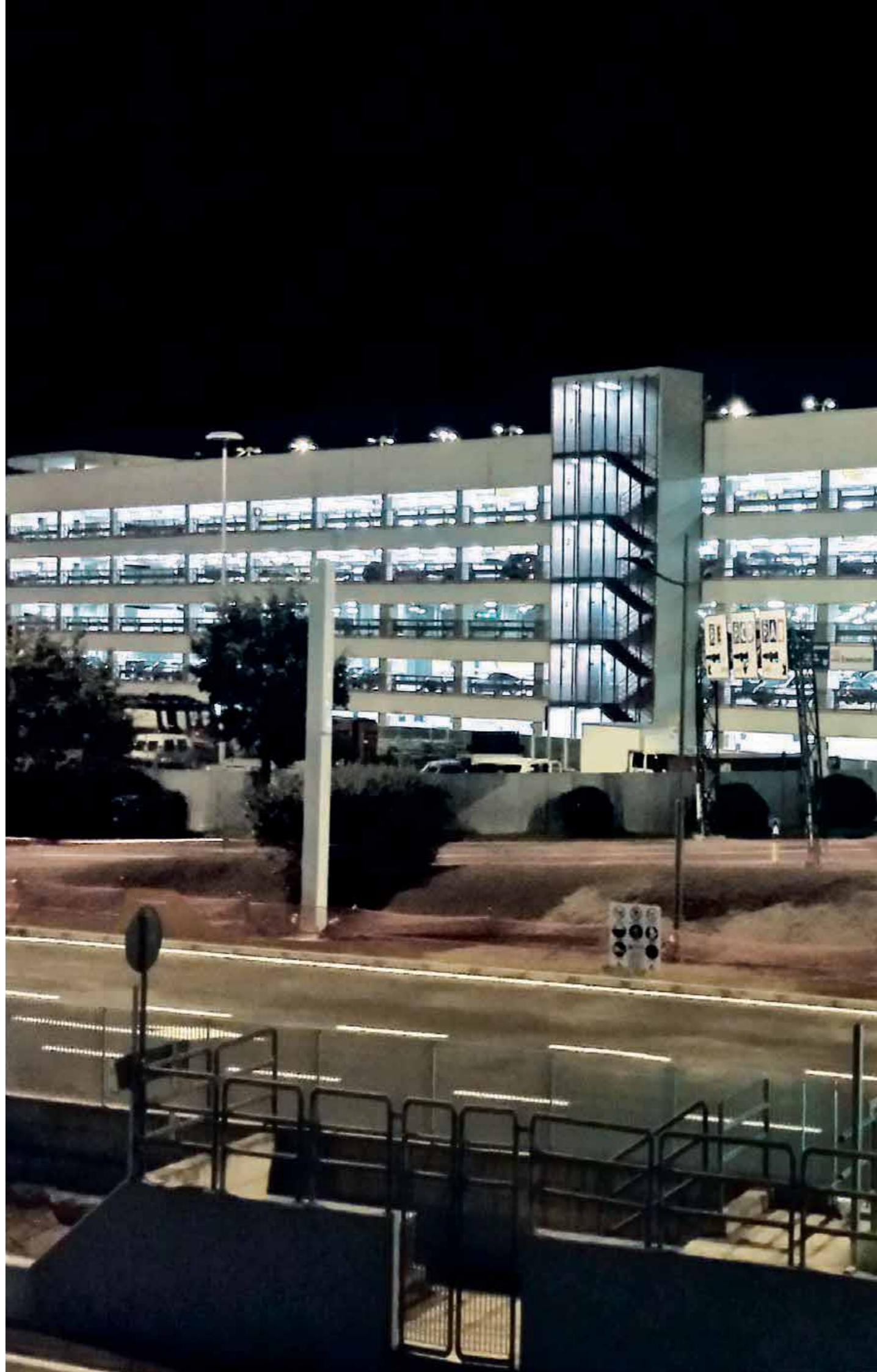
Ampelmann - Port Rotterdam, the Netherlands



Tunnel Milan, Italy



Manerbio Motorway Toll Station Brescia, Italy



Easy parking Rome, Italy





Royal Papworth Hospital Cambridge, England



National Research Center Moscow, Russia



Pietro Barilla Children's Hospital Parma, Italy



Ospedale del mare Naples, Italy



Virgen del Rocío University Hospital | Seville, Spain



Ospedale di Circolo - Macchi foundation Varese, Italy



S. Salvatore Hospital L'Aquila, Italy



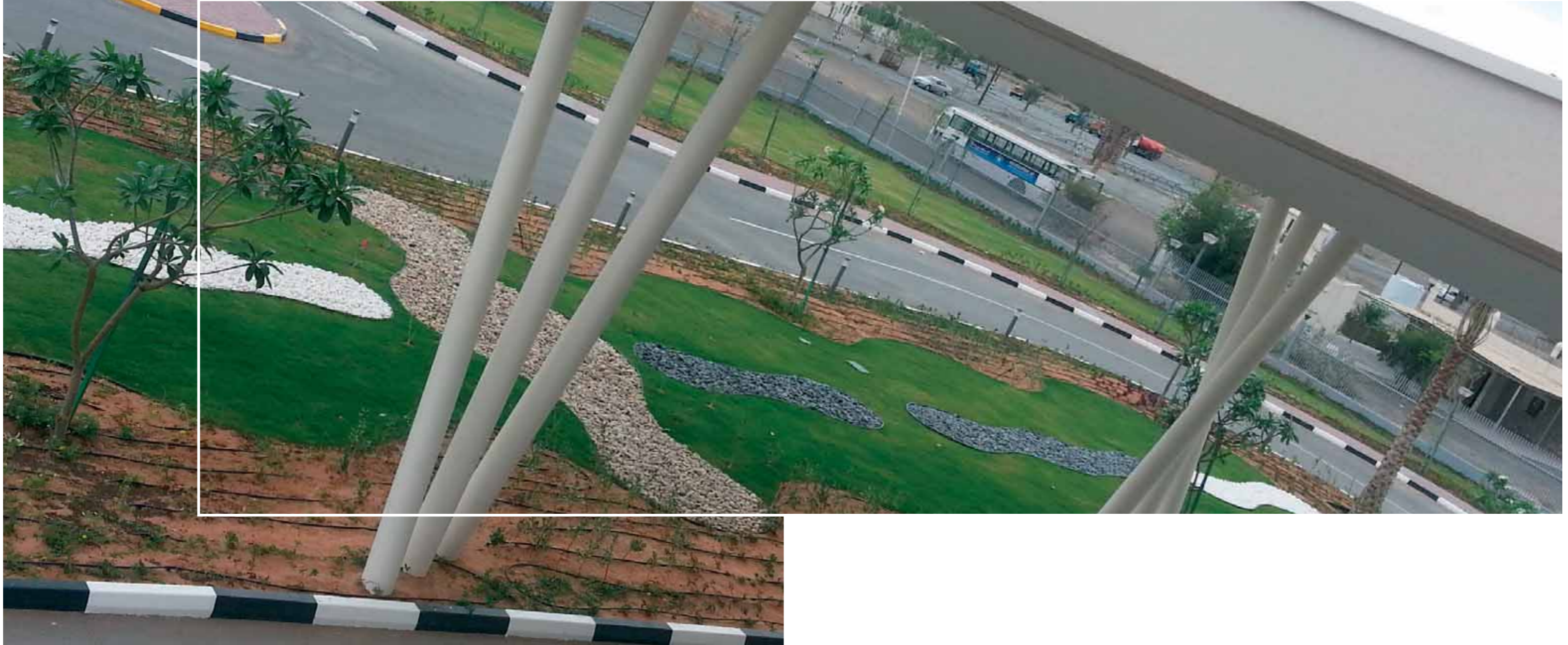
Humanitas Research Hospital Milan - Italy

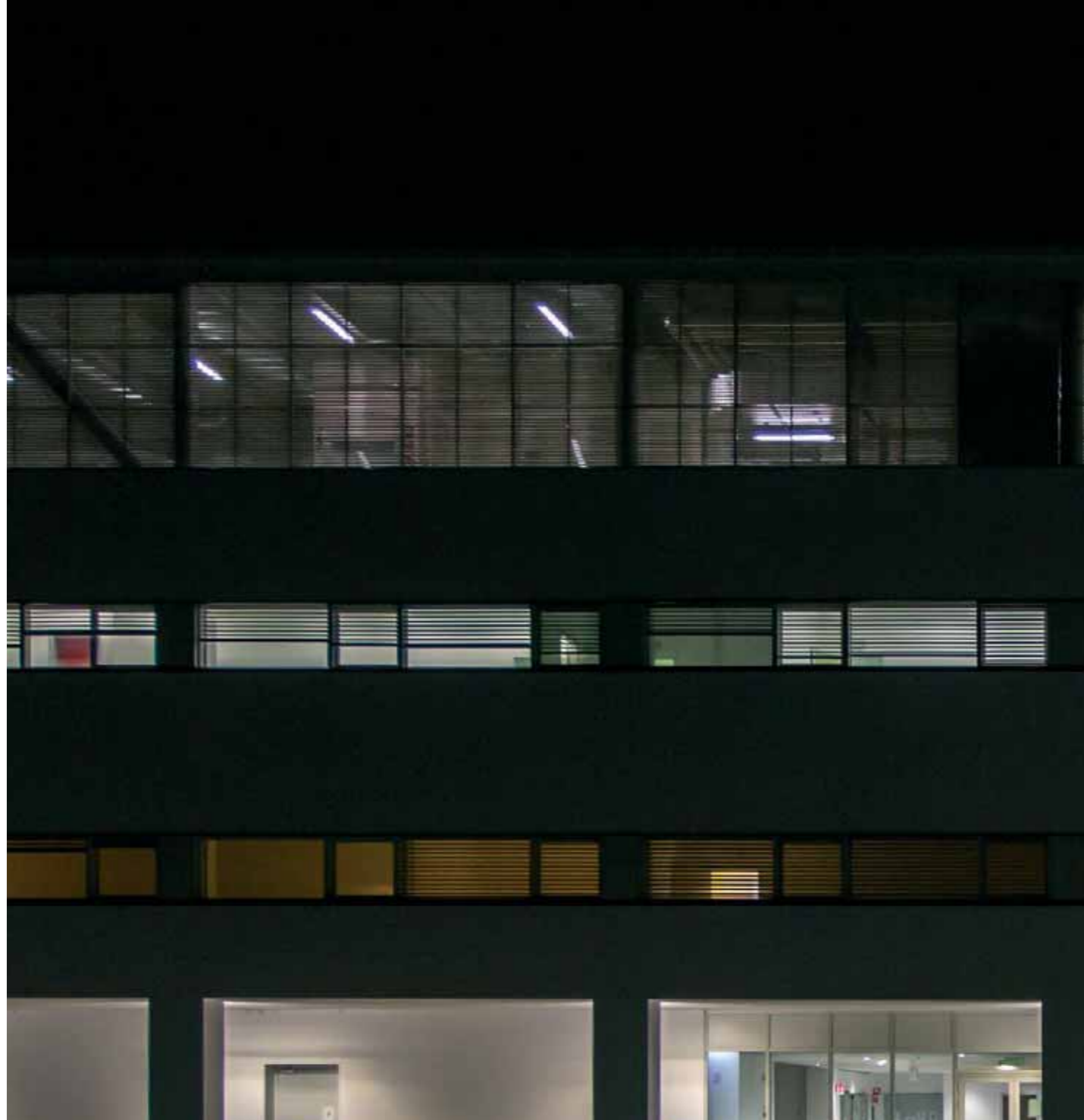


S. Francesco Hospital Nuoro, Italy

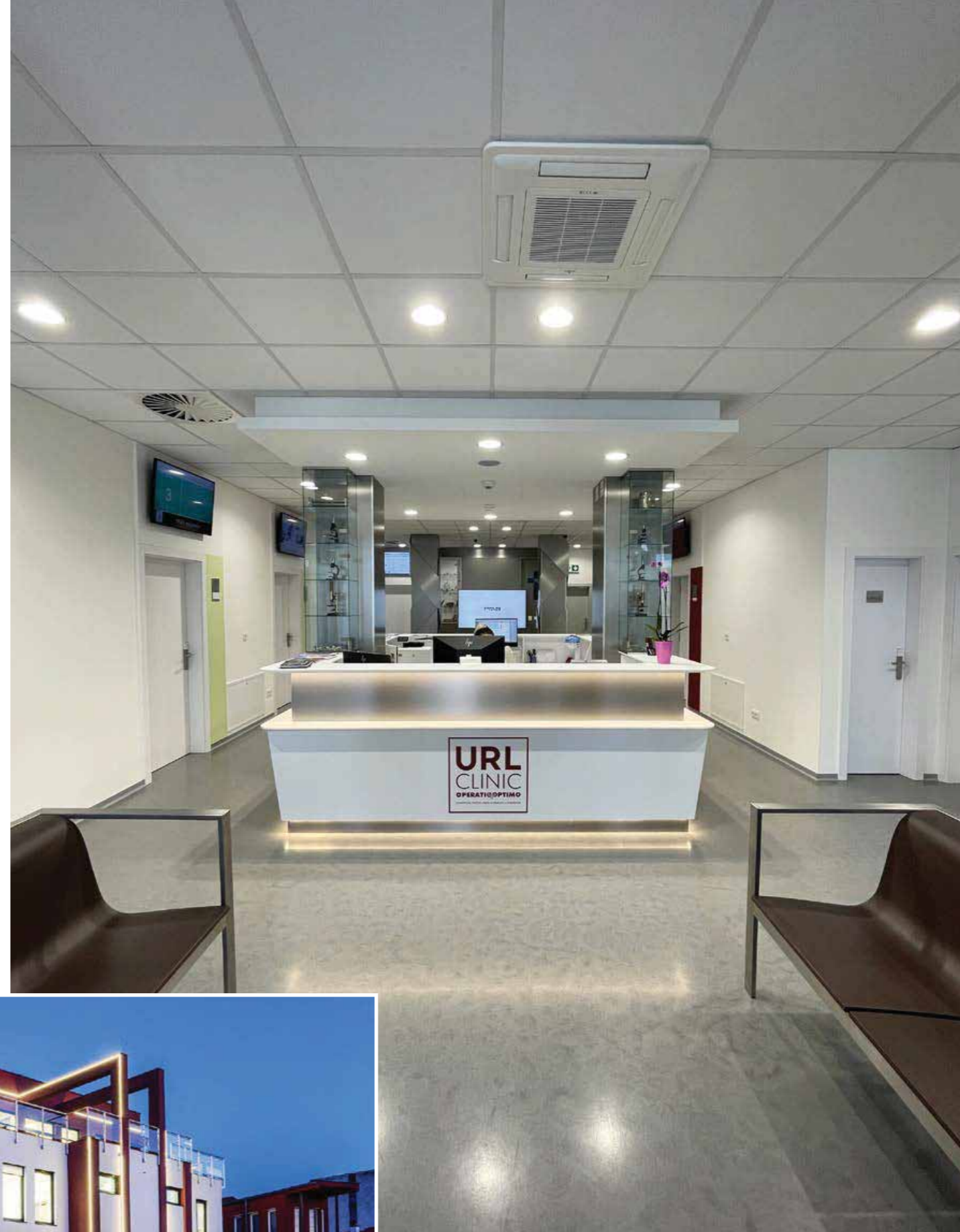
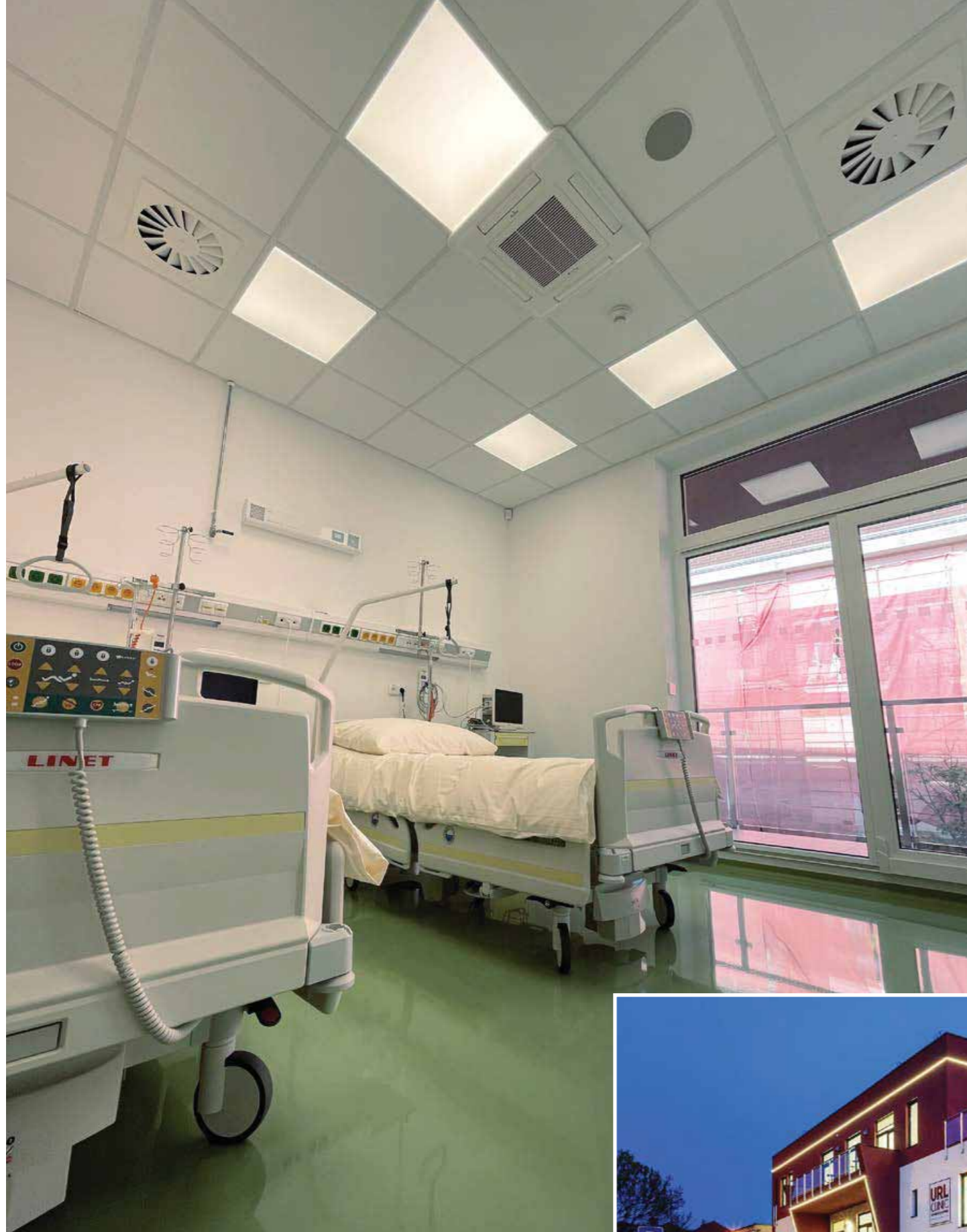


Dumfries and Galloway Hospital Scotland





Guido Salvini Hospital Milan - Italy



URL Clinic Trencin, Slovakia



San Domenico - Agognate Novara, Italy



Villa Clarice Cermenate - Como, Italy

GRUPPO **disano** 



www.disano.it www.fosnova.it

disano 
illuminazione



fosnova